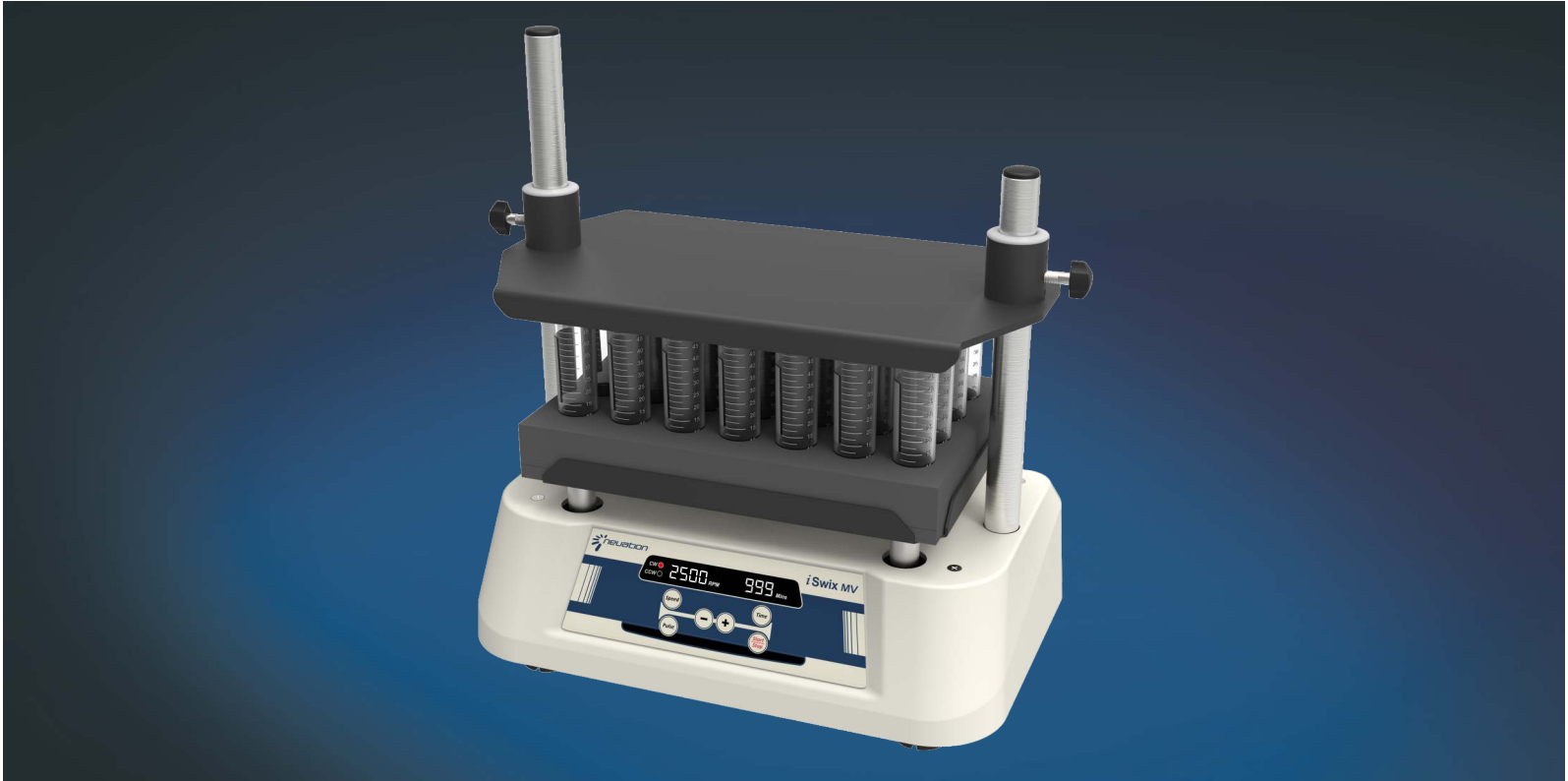


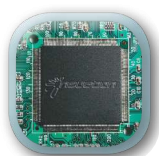
Digital Multi Tube Vortexer with Microprocessor & Brushless Motor



Heavy duty Vortex Mixer with large capacity for high throughput laboratory

- Brushless DC motor for quiet operation and maintenance free long operation.
- Microprocessor controlled unit with digital display.
- Adjustable speed ranging from 300-2500 RPM with increment of 1 RPM and accuracy of +/-5 RPM with option of electing Clockwise (CW) and Counterclockwise (CCW) motion
- Long timer setting from 1 to 999 mins & infinite mode.
- Programmable Pulse with selection of variable time 30-99 seconds.
- Power Overload feature in which if the equipment consumes more power than its capacity, it automatically shuts down.
- Four optional attachments : Supplied with any chosen foam base

Specifications	iSwix MV
Attachments (optional)	a) 7 ml tube foam to accommodate 60 tubes b) 15 ml tube foam to accommodate 45 tubes c) 50 ml tube foam to accommodate 18 tubes d) 250 ml flask foam to accommodate 6 flasks
Digital Display	Yes
Variable Speed	300-2500 RPM
Motor Type	BLDC
Run Time	1-999 mins & infinite
Motion Type	Clockwise (CW) and Counterclockwise (CCW) motion
Pulse Mode	Programmable Pulse with selection of variable time 30-99 seconds.
Weight	18 kg
Input Voltage	24 V
Power Consumption	75 W
Protection class	IP 21



Microprocessor controlled



Brushless DC Motor



Digital Display



Pulse mode

* OEM request can be entertained. Specifications can be changed without notice for quality improvement.